

TEW-424UB

**54Mbps 802.11g Wireless USB 2.0 Adapter
Quick Installation Guide**

**Guide d'installation rapide du
54Mbps 802.11g USB 2.0 sans fil**

**Anleitung zur Schnellinstallation des
802.11g USB-2.0-Adapter mit 54MBit/s**

**Guía de Instalación Rápida
Adaptador inalámbrico USB 2.0 802.11g a 54Mbps**

Version 08.08.04



TRENDnet[®]
TRENDware, USA
What's Next in Networking

Table of Contents

English	1
1. Prepare for Installation	1
2. Install Hardware	2
3. Install Wireless Configuration Utility	3
4. Verify Installation	6
5. Wireless Configuration	9
6. Configure TCP/IP Network Protocol	14
Troubleshooting	18

English QIG

1. Prepare for Installation

Thank you for purchasing the TEW-424UB. Your new 54Mbps 802.11g Wireless USB 2.0 Adapter will allow you to connect to 802.11g or 802.11b networks and begin wirelessly sharing the Internet, files, and other resources.

This guide will help you set up and configure your Wireless USB Adapter. Following this installation should be quick and easy. If you run into problems, please refer to the Troubleshooting section or the more detailed installation procedures on the User's Guide CD-ROM. If you need further technical support, please visit www.TRENDNET.com or call technical support by phone.

Verify Package Contents

Please make sure you have everything in the box:



Minimum Hardware Requirements

Before installing this 802.11g Wireless USB Adapter, you should have a:

1. USB enabled computer
2. 300 MHz processor and 32 MB of memory (Recommended)
3. CD-ROM drive
4. 802.11g or 802.11b Access Point (for Infrastructure Mode) or another 802.11g wireless adapter (for Ad-Hoc/Peer-to-Peer networking mode).
5. Windows 98SE/ME/2000/XP

Note: Do not connect the Wireless USB Adapter to your computer until you have finished installing the Utility and Driver.

2. Install Hardware

The TEW-424UB is hot-pluggable. You can connect or disconnect the TEW-424UB while the computer is on.

Connect the TEW-424UB Wireless USB Adapter to your computer's USB port.

Note: you can use the included USB extension cable for your convenience to extend the cable connection between your computer and the TEW-424UB.



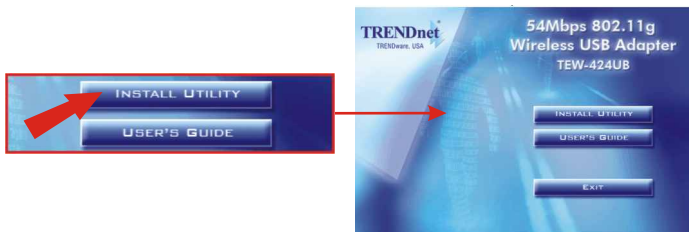
3. Install Wireless Configuration Utility

Windows 98SE/ME/2000/XP

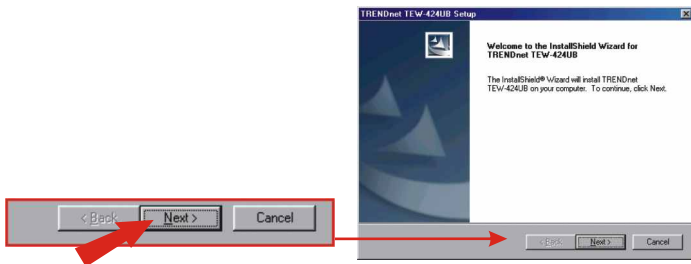
1. Insert the TEW-424UB CD-ROM into your computer's CD-ROM drive; the installation menu window will appear automatically. If the window does not appear automatically, click **Start**, click **Run**, and type **E:\Autorun.exe** in the text-field. Click **OK**.

Note: Replace "E" in "E:\Autorun.exe" with whichever letter is assigned to your CD-ROM drive.

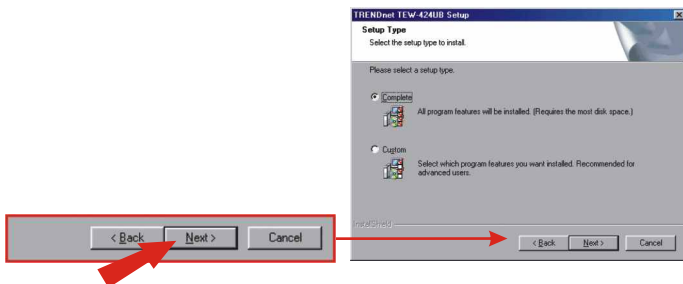
2. On the Installation Menu, click **Install Utility**.



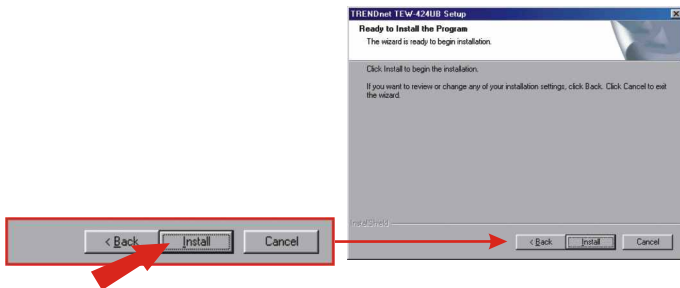
3. Follow the Install Shield Wizard's instructions to install the wireless configuration utility.
4. Click **Next**.



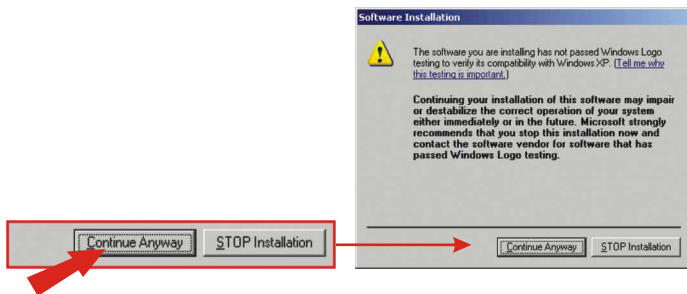
5. Click Next.



6. Click Install.

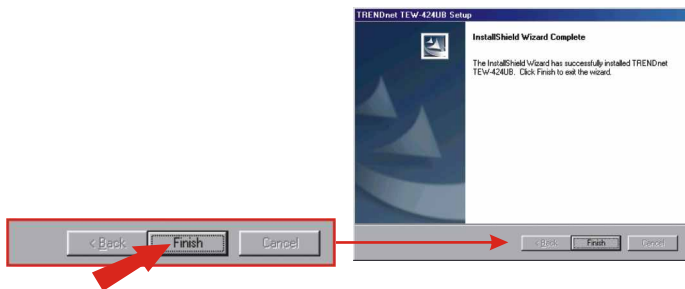


7. A warning message will tell you that the device you're installing has not yet been certified for Windows XP compatibility. Click **Continue Anyway**.



Note: For Windows 2000, you will receive a message "Digital Signature Not Found", click **Yes** to continue.

8. Click **Finish**.



9. On the Installation Menu, click **Exit**.

Note: For Windows 98/Me, manually restart your computer.

4. Verify Installation

Windows 98SE/ME

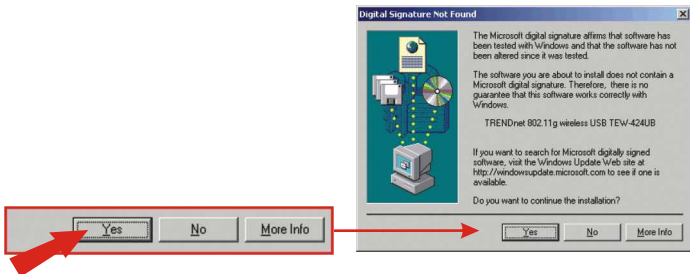
1. After installing the utility software, connect the Wireless USB Adapter to your computer's USB port. Windows will detect new hardware and load the driver automatically.

Congratulations!
Installation is now complete.

Note: After driver installation is complete, the wireless icon will appear in your system tray (next to the clock on the bottom right corner of your screen). If it does not appear, restart your computer. **Go to section 5 Wireless Configuration.**

Windows 2000

1. After installing the utility software, connect the Wireless USB Adapter to your computer's USB port. Windows will detect new hardware and load the driver automatically.



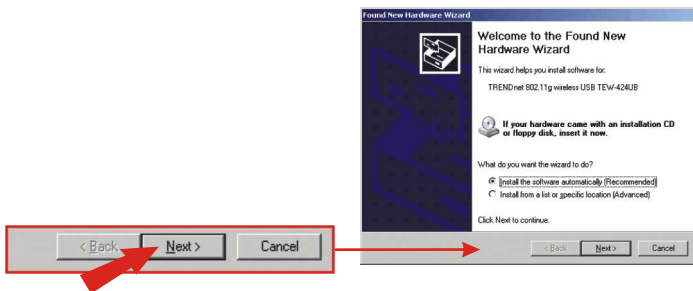
- When the Digital Signature Not Found Window appears, click **Yes** to continue.

Note: TRENDnet's Wireless Adapters have been fully tested under all supported Windows Operating Systems and have been approved for their functionality.

Note: After clicking Yes, the wireless icon will appear in your system tray (next to the clock on the bottom right corner of your screen). If it does not appear, restart your computer. Go to section 5 Wireless Configuration.

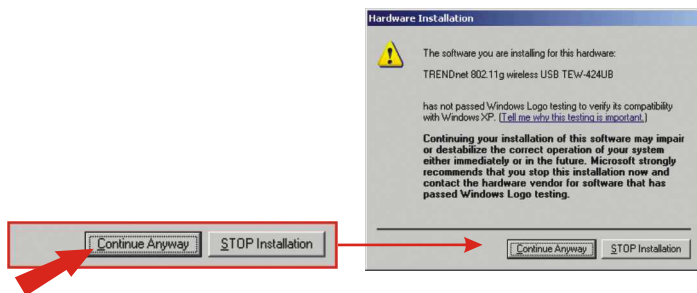
Windows XP

- After installing the utility software, connect the Wireless USB Adapter to your computer's USB port. The "Found New Hardware Wizard" will appear. Verify that **Install the software automatically** is selected and that the TEW-424UB CD-ROM is in your CD-ROM drive. Then click **Next**.



- Click **Next**.

3. A warning message will tell you that the device you're installing has not yet been certified for Windows XP compatibility. Click **Continue Anyway**.



Note: TRENDnet's Wireless Adapters have been fully tested under all supported Windows Operating Systems and have been approved for their functionality.

4. The "Found New Hardware Wizard" will tell you that it has finished installing the software for your TEW-424UB. Click **Finish**.

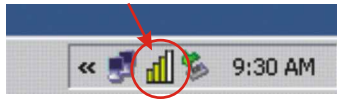


Note: After clicking Finish, the wireless icon will appear in your system tray (next to the clock on the bottom right corner of your screen). If it does not appear, restart your computer. Go to section 5 Wireless Configuration.

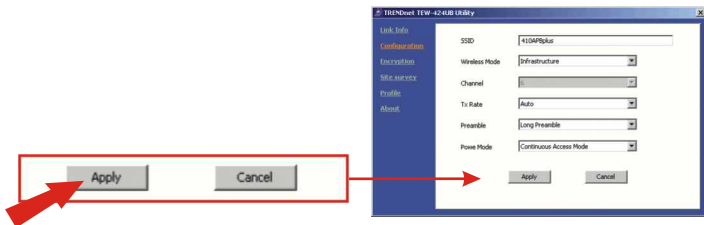
5. Wireless Configuration

Infrastructure Mode (PC-to-Access Point connection)

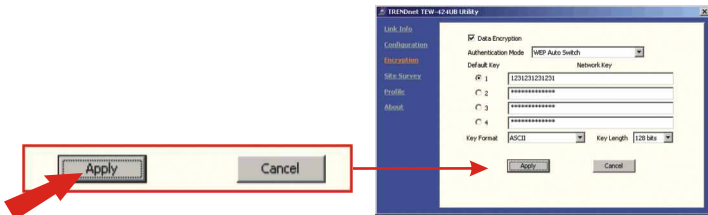
1. Double-click the wireless icon in your system tray (next to the clock in the bottom right corner of your screen).



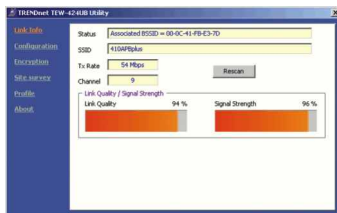
2. Click on the Configuration link. Type in a Network SSID that matches the SSID of your Access Point. (If you are unsure of your Access Point's SSID, refer to your Access Point settings)
3. Select **Infrastructure (Access Point)** as the Wireless Mode.
4. Click **Apply**.



5. If you would like to enable Encryption, click on the Encryption link. Click on the box next to Data Encryption, enter the WEP key that matches your wireless network encryption setting, then click **Apply**.



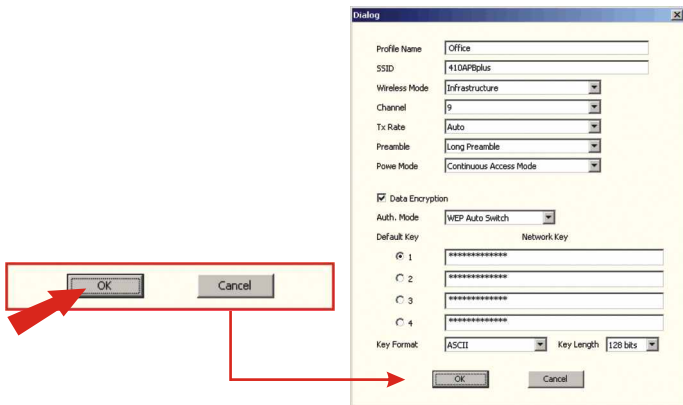
6. On the Link Info window, if you see connection information, your Wireless USB Adapter configuration is complete.



7. To save the current settings as a profile, click on the profile link. Then click on **Add Current**.



8. Type in a Profile Name, then click **OK**.

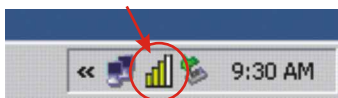


9. Your configuration of the Wireless USB Adapter is now complete.



Ad-Hoc Mode (Computer-to-Computer connection)

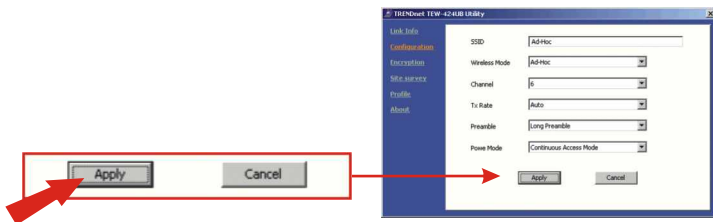
1. Double-click the wireless icon in your system tray (next to the clock in the bottom right corner of your screen).



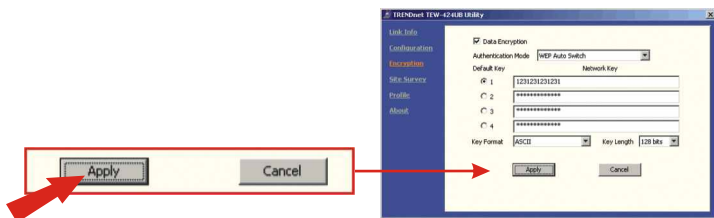
2. Click on the Configuration link. Select a Network SSID that matches the SSID of the wireless card you will be connecting to. (If you are unsure of your other wireless card's SSID, refer to that card's settings)

3. Select **Ad-Hoc (Computer to Computer)** as the Wireless Mode.

4. Because you are configuring an Ad-Hoc network, you must select a Channel. Select the same channel number on both computers, then click **Apply**.



5. If you would like to enable Encryption, click on the Encryption link. Click on the box next to Data Encryption. Enter the WEP key that matches your wireless network encryption setting, then click **Apply**.



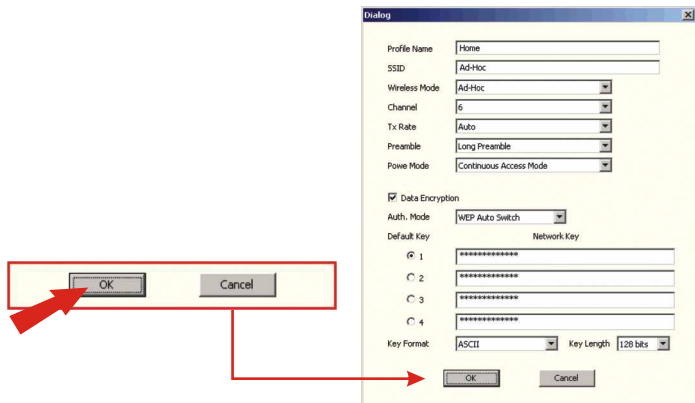
6. On the Link Info window; if you see connection information, your Wireless USB Adapter configuration is complete.



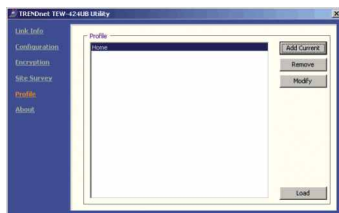
7. To save the current settings as a profile, click on the profile link, then click on **Add Current**.



8. Type in a Profile Name, then click **OK**.



9. Your configuration of the Wireless USB Adapter is now complete.



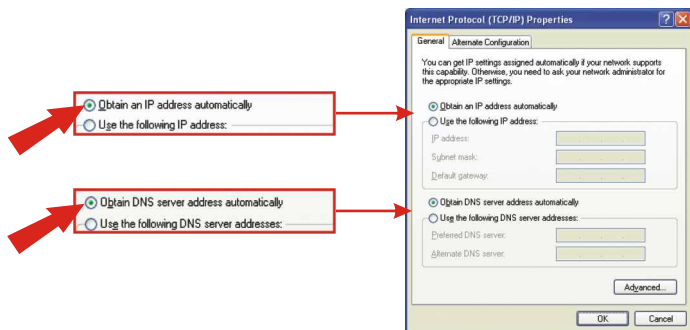
6. Configure TCP/IP Network Protocol

Windows 2000/XP

1. On the Desktop, right-click **My Network Places** and click **Properties**. Then, right-click **Wireless Network Connection** and click **Properties**; the Wireless Network Connection Properties Window will appear
2. Under the General tab, select **Internet Protocol (TCP/IP)** and click the **Properties** button; the Internet Protocol (TCP/IP) Properties Window will appear.

i. For DHCP IP address Setup

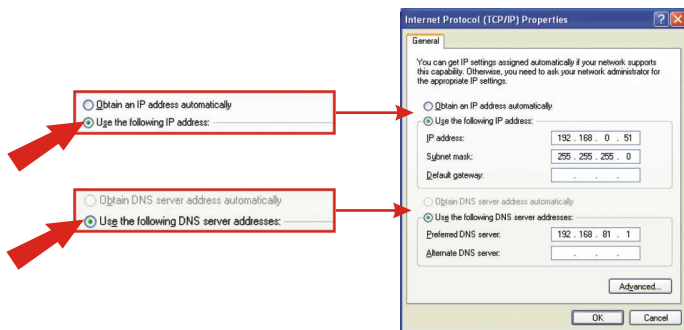
1. Select the **Obtain an IP address automatically** option.
2. Select the **Obtain DNS server address automatically** option.



3. Click **OK** to save the settings.

ii. For Static IP address Setup

1. Select the **Use the following IP address** option and enter the IP, Subnet Mask, and Default gateway addresses.
2. Select the **Use the following DNS server address** option and enter DNS addresses.



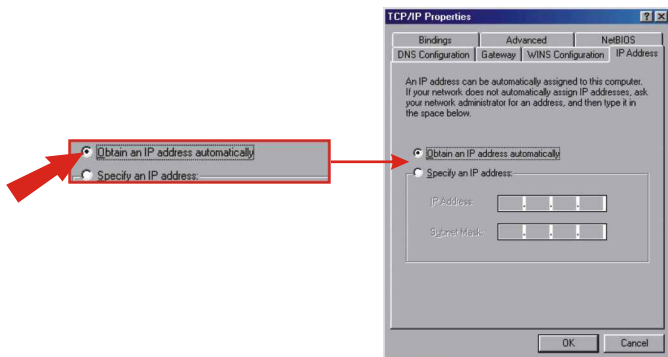
3. Click **OK** to save the settings.

For Windows 98/ME users

1. On the Desktop, right-click **Network Neighborhood** and click **Properties**. Then, right-click **Wireless Network Connection** and click **Properties**; the Wireless Network Connection Properties Window will appear.
2. Under **Configuration** tab, select **802.11b Pen Size Wireless USB Adapter (TCP/IP protocol)** and click on the **Properties** button; the TCP/IP Protocol Properties Window will appear

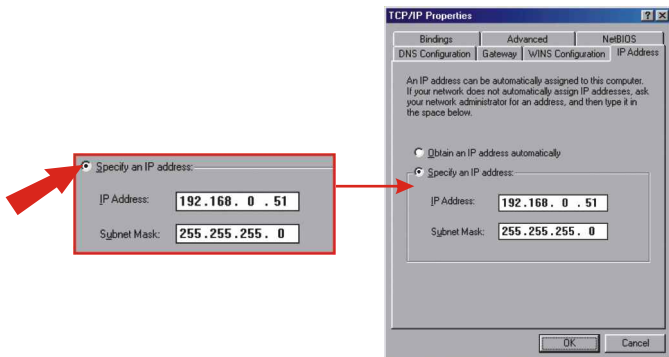
i. For DHCP IP address Setup

1. Select the **Obtain an IP address automatically** option.



ii. For Static IP address Setup

1. Select the **Specify an IP address** option, and enter the IP and Subnet Mask addresses.



Note: If your network's Wireless Access Point or Wireless Router has a DHCP Server feature, please enable it and configure the wireless adapter to use DHCP IP addresses. After the wireless adapter connects to the Access Point or Router, it will receive addresses automatically.

i.For Checking the Adapter's IP Address

Windows 2000/XP:

go to "start", select "run", type in **cmd**, then click ok. At the command prompt (C:\), type in **ipconfig/all** and hit "Enter".

Windows 98/ME:

go to "Start", select "Run", type in **winipcfg**, then click "OK". From the drop-down menu, select the name of the network adapter (not the PPP Adapter).

Ping Command:

If you know a networked device's IP address, in the command prompt (c:\), type in **ping xxx.xxx.xxx.xxx** (where xxx.xxx.xxx.xxx is the device's IP address) and hit "Enter". If you see replies from this IP address, your computer should be able to communicate with this device.

Q1: I completed all the steps in the quick installation guide, but my wireless USB Adapter isn't connecting to my access point. What should I do?

A1: First, you should first verify that the Network SSID matches your wireless router or access point's SSID. Second, you should check your TCP/IP properties to ensure that Obtain an IP address automatically is selected. Third, you can click on the Site Survey link to check and see if there are any available wireless networks listed.

Q2: Windows is unable to recognize my hardware. What should I do?

A2: Make sure your computer meets the minimum requirements as specified in Section 1 of this quick installation guide. Also, you must install the wireless configuration utility (as described in Section 3) before connecting the wireless USB Adapter.

Q3: I cannot open the wireless configuration utility. What should I do?

A3: Go to your device manager (control panel à system) to make sure the adapter is installed properly. If you see a networking device with a yellow question mark or exclamation point, you will need to reinstall the device and/or the drivers.

If you still encounter problems, please refer to the User's Guide CD-ROM or contact technical support.

Contact Technical Support

Telephone: +1-310-626-6252
Fax: +1-310-626-6267
Website: www.TRENDNET.com
E-mail: support@trendware.com

Technical Support Hours

7:00AM ~ 6:00PM
Monday through Friday
Pacific Standard Time (except holidays)

TRENDnet[®]

TRENDware, USA

What's Next in Networking

Product Warranty Registration

Please take a moment to register your product online.
Go to TRENDware's website at <http://www.TRENDNET.com>

TRENDware International, Inc.
3135 Kashiwa Street
Torrance, CA 90505

<http://www.TRENDNET.com>